

HI 6600

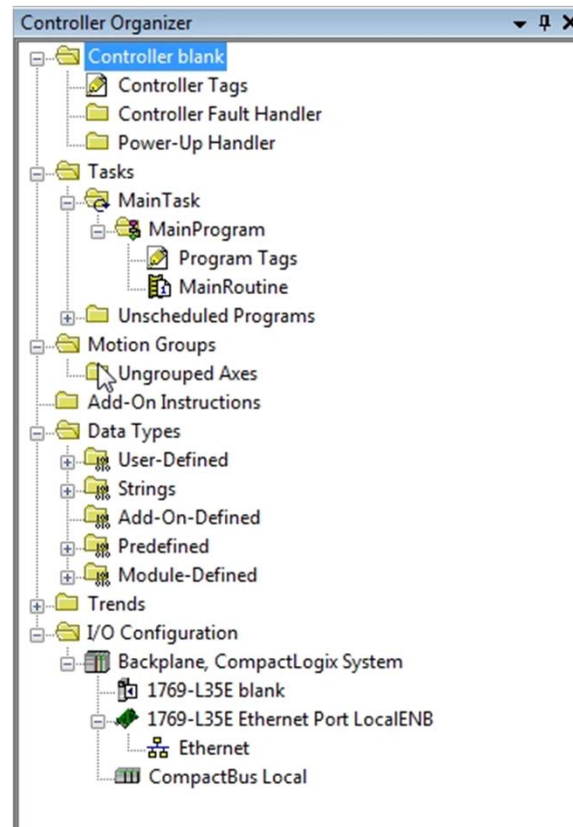
Installing the HI 6600 into the CompactLogix system

HARDY
PROCESS SOLUTIONS

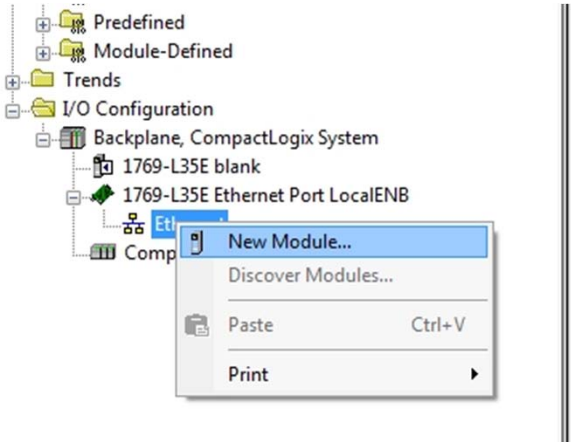


WWW.HARDYSOLUTIONS.COM

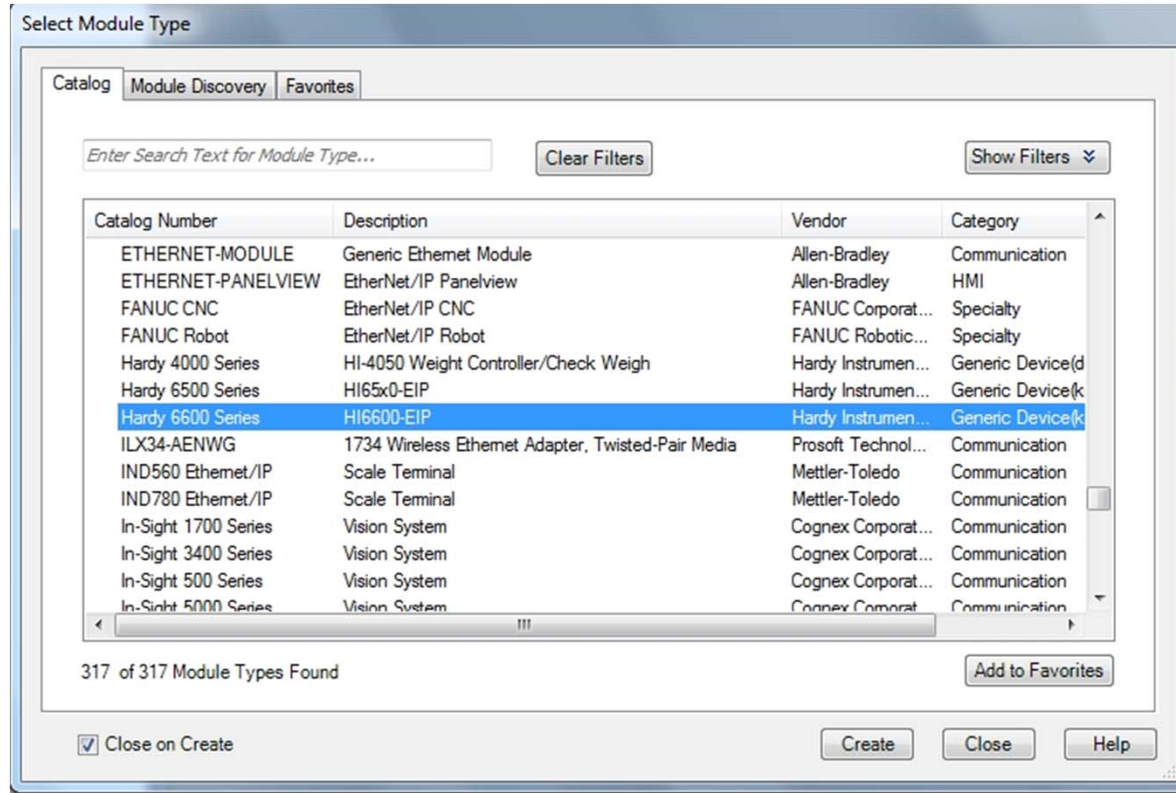
Project Organizer



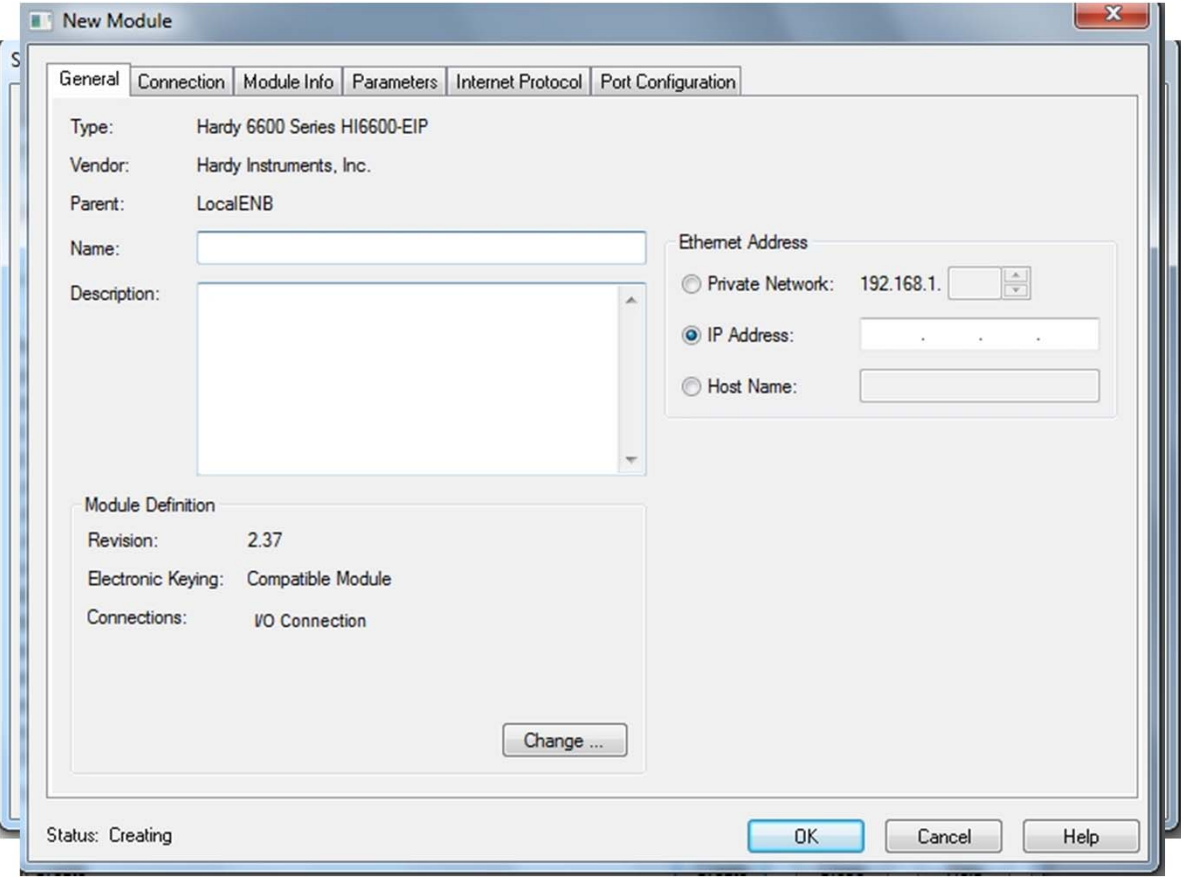
Adding the New Module



Select the Unit to add



The New Module dialog box



Describing the Module

New Module

General* | Connection | Module Info | Parameters | Internet Protocol | Port Configuration

Type: Hardy 6600 Series HI6600-EIP
Vendor: Hardy Instruments, Inc.
Parent: LocalENB
Name: HI6600
Description: This is a Hardy HI 6600 unit.

Ethernet Address
 Private Network: 192.168.1.
 IP Address: 10 . 153 . 31 . 88
 Host Name:

Module Definition
Revision: 2.37
Electronic Keying: Compatible Module
Connections: I/O Connection

Change ...

Status: Creating

OK Cancel Help

Module I/O Controller Tags

Scope: blank Show: STRING, ALARM, ALARM_ANALOG, ALARM_DIGITAL, AUX_V...

	Name	Value	Force Ma	Style	Data Type
+	HI6600:I	{...}	{...}		_0102:Hardy6600Series_EC286805:I:0
+	HI6600:O	{...}	{...}		_0102:Hardy6600Series_81A4F848:O:0



Controller Output tag expanded

Scope: blank Show: STRING, ALARM, ALARM_ANALOG, ALARM_DIGITAL, AUX_V...

Name	Value	Style	Data Type
- HI6600:0	{...}		_0102:Har
+ HI6600:0.Command	0	Decimal	DINT
+ HI6600:0.Aux_Command_Information	0	Decimal	DINT
+ HI6600:0.Parameter_ID	0	Decimal	DINT
+ HI6600:0.Parameter_Value	0	Decimal	DINT
+ HI6600:0.Selected_WPM1_M1	0	Decimal	DINT
+ HI6600:0.M1_reserved_1	0	Decimal	DINT
+ HI6600:0.M1_reserved_2	0	Decimal	DINT
+ HI6600:0.M1_Parameter_ID	0	Decimal	DINT
+ HI6600:0.Selected_WPM2_M2	0	Decimal	DINT
+ HI6600:0.M2_reserved_1	0	Decimal	DINT
+ HI6600:0.M2_reserved_2	0	Decimal	DINT
+ HI6600:0.M2_Parameter_ID	0	Decimal	DINT
+ HI6600:0.Selected_WPM3_M3	0	Decimal	DINT
+ HI6600:0.M3_reserved_1	0	Decimal	DINT
+ HI6600:0.M3_reserved_2	0	Decimal	DINT
+ HI6600:0.M3_Parameter_ID	0	Decimal	DINT
+ HI6600:0.Selected_WPM4_M4	0	Decimal	DINT



Controller Input tag expanded

Scope: Show: STRING, ALARM, ALARM_ANALOG, ALARM_DIGITAL, AUX_V...

Name	Value	Style	Data Type
- HI6600:I	{...}		_0102:Ha
- HI6600:I.ConnectionFaulted	0	Decimal	BOOL
+ HI6600:I.Command_Echo	0	Decimal	DINT
+ HI6600:I.Command_Status	0	Decimal	DINT
+ HI6600:I.Parameter_ID	0	Decimal	DINT
+ HI6600:I.Parameter_Value	0	Decimal	DINT
+ HI6600:I.M1_Status	0	Decimal	DINT
- HI6600:I.M1_Net_Weight	0.0	Float	REAL
- HI6600:I.M1_Gross_Weight	0.0	Float	REAL
+ HI6600:I.M1_Parameter_value	0	Decimal	DINT
+ HI6600:I.M2_Status	0	Decimal	DINT
- HI6600:I.M2_Net_Weight	0.0	Float	REAL
- HI6600:I.M2_Gross_Weight	0.0	Float	REAL
+ HI6600:I.M2_Parameter_value	0	Decimal	DINT
+ HI6600:I.M3_Status	0	Decimal	DINT
- HI6600:I.M3_Net_Weight	0.0	Float	REAL
- HI6600:I.M3_Gross_Weight	0.0	Float	REAL
+ HI6600:I.M3_Parameter_value	0	Decimal	DINT



Parameters in the AOP

General Connection Module Info **Parameters** Internet Protocol Port Configuration

Group: <All Parameters>

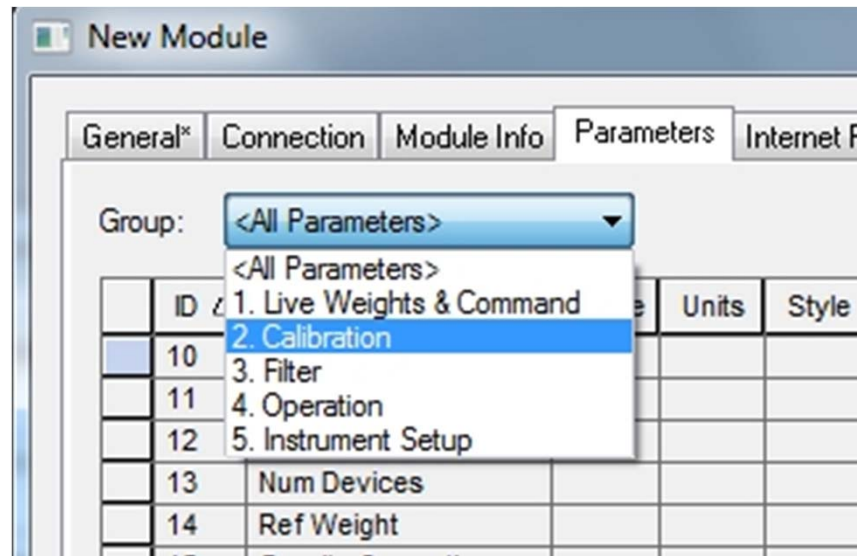
ID	Name	Value	Units	Style
10	Channel	Ch 1		Channel Sel
11	Loadcell Sensitivity	2.0 mV/V		Select Load
12	Cal Motion Tolerance	10.0	Float	Enter Calibr
13	Num Devices	0	Decimal	C2 Chips (L
14	Ref Weight	0.0	Float	Enter Refer
15	Gravity Correction	1.0	Float	Enter Gravit
16	Cal Low Weight	0.0	Float	Enter Cal Lo
17	Span Weight	50.0	Float	Enter Span 1
18	Waversaver	0.5 Hz		Select Wave
19	Num Averages	45	Decimal	Enter the nu
20	Count Enable	Disable		Select to En
21	Unit Weight	3.0	Float	Enter Unit W
22	Sample Size	1	Decimal	Enter Sampl
23	Zero Tolerance	20.0	Float	Enter Zero 1
24	Zero Amount	-8.8392562866210937	Float	

Insert Factory Defaults Set

i The values displayed here are read directly from the module. These values are not stored in the controller and are not sent to the module when a connection is established. Click Set to write updated values to the module.

Status: Running OK Cancel Apply Help

Group Selection



Live Weights & Commands

General Connection Module Info **Parameters** Internet Protocol Port Configuration

Group: 1. Live Weights & Command

ID	Name	Value	Units	Style	D
10	Channel		Ch 1		Channel Select
27	Weigh Sample Command				
28	Unit Count	30		Decimal	
101	Current Net Weight	89.199996948242188		Float	
102	Current Gross Weight	56.200000762939453		Float	
106	Tare Command				Select to perform
107	Zero Command				Select to perform
108	C2 Command				Select to perform
109	Cal Low Command				Select to perform
110	Cal High Command				Select to perform
111	Zero Status		Zero Ok		Status on a Zer
112	Tare Status		Tare Failed, in motion		Status on a Tar
113	Calibration Status		Calibration Ok		Status on C2 C

Insert Factory Defaults Set



Example - Tare Command

Group: 1. Live Weights & Command

ID	Name	Value	Units	Style	D
10	Channel		Ch 1		Channel Selecti
27	Weigh Sample Command				
28	Unit Count	30		Decimal	
101	Current Net Weight	89.199996948242188		Float	
102	Current Gross Weight	56.200000762939453		Float	
106	Tare Command				Select to perfor
107	Zero Command				Select to perfor
108	C2 Command	DoTare			Select to perfor
109	Cal Low Command				Select to perfor
110	Cal High Command				Select to perfor
111	Zero Status	Zero Ok			Status on a Zer
112	Tare Status	Tare Failed, in motion			Status on a Tar
113	Calibration Status	Calibration Ok			Status on C2 C

Insert Factory Defaults Set

Results of Tare Command

The screenshot shows the RSLogix 5000 software interface. The main window displays the 'Parameters' tab for a module. The 'Group' is set to '1. Live Weights & Commanc'. A table lists various parameters with their current values and units.

ID	Name	Value	Units	Style	D
10	Channel		Ch 1		Channel Select
27	Weigh Sample Command				
28	Unit Count			Decimal	
101	Current Net Weight	0	0.0	Float	
102	Current Gross Weight	56.200000762939453		Float	
106	Tare Command				Select to perform
107	Zero Command				Select to perform
108	C2 Command				Select to perform
109	Cal Low Command				Select to perform
110	Cal High Command				Select to perform
111	Zero Status		Zero Ok		Status on a Zero
112	Tare Status		Tare Ok		Status on a Tare
113	Calibration Status		Calibration Ok		Status on C2 Command

Below the table, there is a 'Set' button and a note: 'The values displayed here are read directly from the module. These values are not stored in the controller and are not sent to the module when a connection is established. Click Set to write updated values to the module.'

Status: Running

Buttons: OK, Cancel, Apply, Help

